

Setting up TeamSpeak 2 (TS2)

(This guide was written for use with Windows XP, but most other versions of Windows should work the same way.)



When installing TS2, have it place a TeamSpeak icon on your desktop (you don't have to do this, but it is easier).

After you have TS 2 installed, double left click on the TS2 icon on your desktop, or:

- a. Single left click on the Windows "START" icon in the lower left corner of your screen.
- b. Move your mouse pointer to the "Programs" (no clicks – just move), then move your mouse pointer to the right and select "TeamSpeak 2 RC2" (no clicks – just move). Double left click (left click = left mouse button) the new TeamSpeak 2 RC2 that just appeared, to the right.
- c. You should now see a new purple TS2 start window named "TeamSpeak 2" (see below).

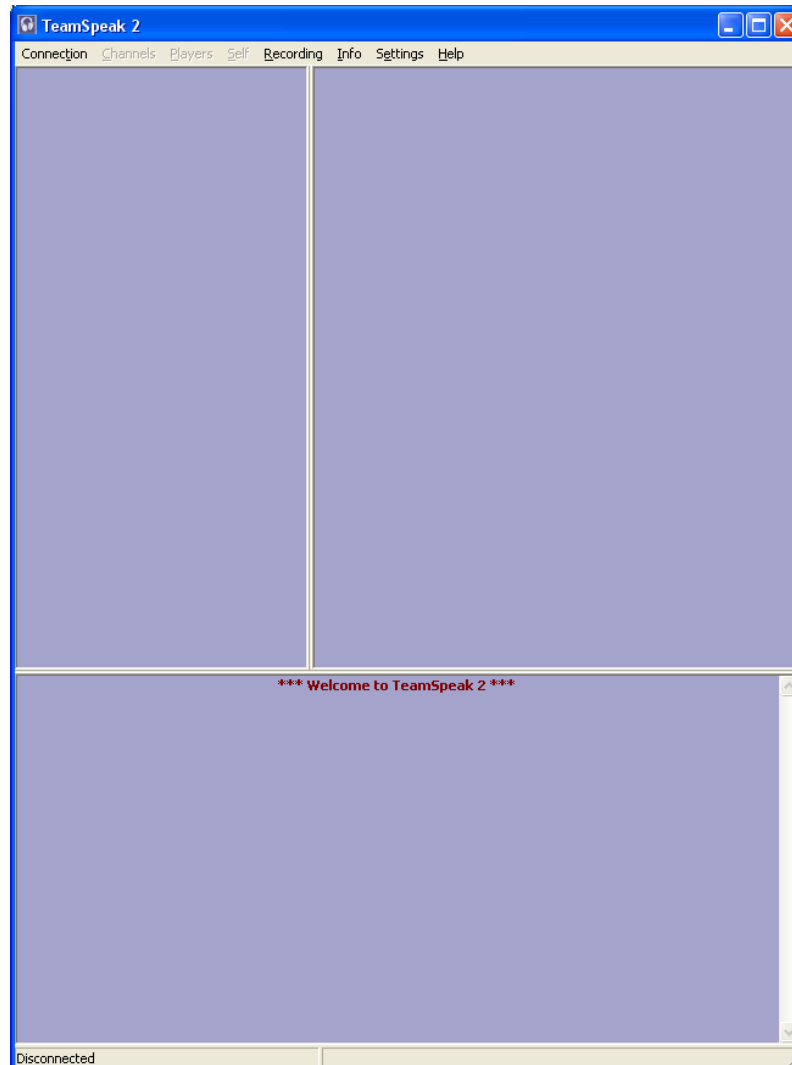


Figure 1 – TeamSpeak 2 start window.

(continued)

- d. Move your mouse pointer to “Connection” on the upper left hand side of the TS 2 start window. A white drop down menu appears, click on “Connect” (next to the green lightening bolt). A new window will open called “Connect To Server” (see below).

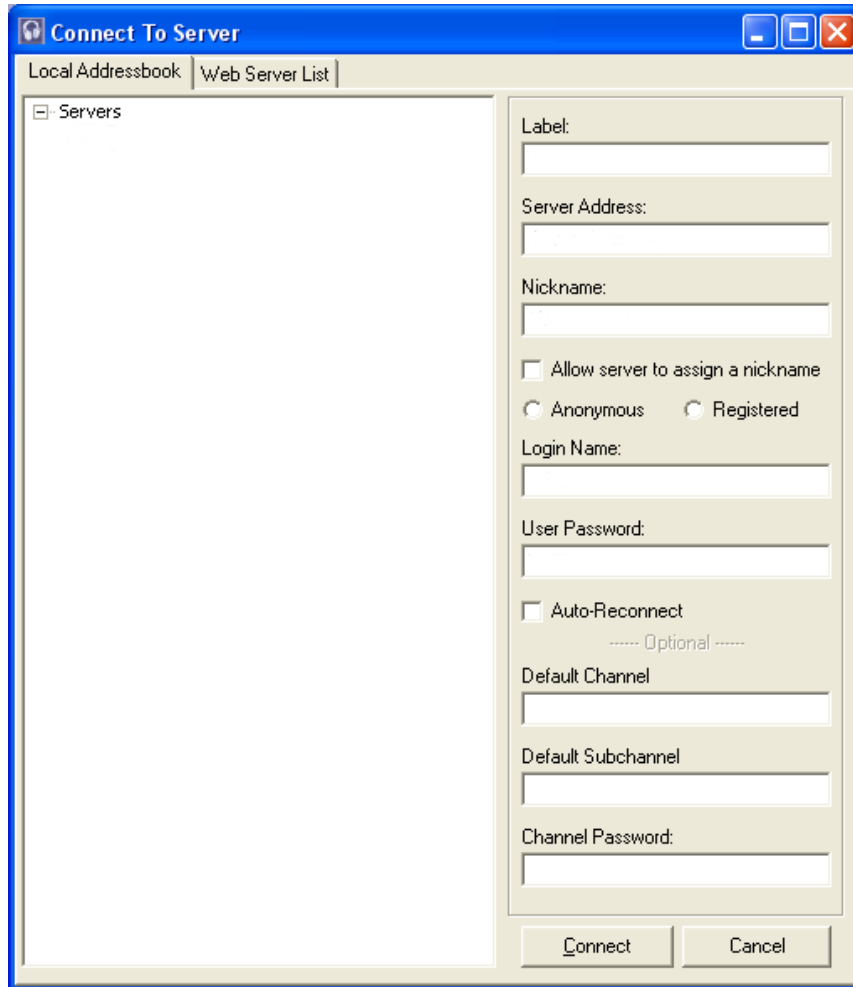


Figure 2 – TS 2 Connect To Server window.

- e. Place your mouse pointer on the word “Servers” in the upper left hand side of the *Connect To Server* window. Right click once (right click = right mouse button), move your mouse pointer onto the words “Add Server”. A new box will open with the words “New Server” high lighted. Enter the name of the TS 2 server (for this example, use **BP comms**), and press the Enter key. *Your Connect To Server* should now look something like Figure 3 on the next page.

(continued)

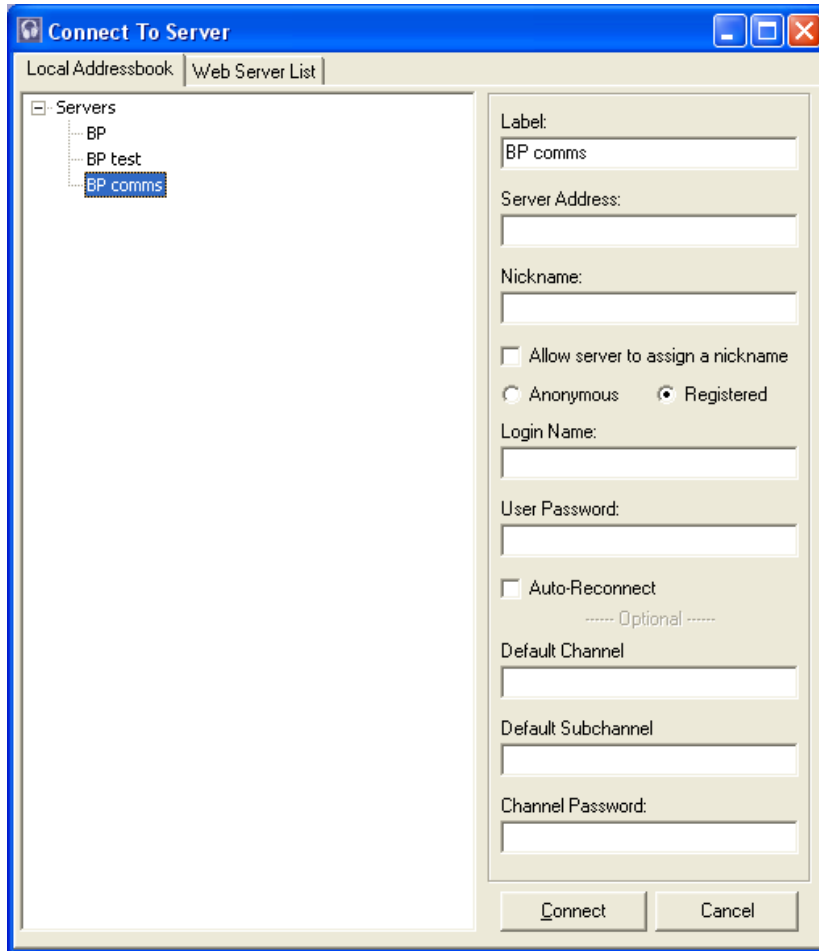


Figure 3 - TS 2 Connect To Server window pending new TS 2 server information.

- f. Now enter the following information into the designated area as described:

For “Server Address:” put in the TS2 server address (for BP comms TS 2 server put **d-days.dvrDNS.org:8768** EXACTLY as stated in bold).

For “Nickname:” put the nickname you want to have displayed in the TS2 server. Do not allow the server to assign a nickname (leave this box un checked).

Note: In most TS2 servers, you must have some kind of nickname, or you could be kicked out of the TS2 server. Also, most TS2 servers only allow normal characters – numbers, letters, and simple punctuation.

Select “Anonymous”. The *Connect To Server* window will now look something like the example in Figure 4 on the next page (the difference will could be the name and amount of TS 2 server you may already have setup).

Select “Registered” only if you have been registered for the TS 2 server you are connecting to (for the BP server, most users are NOT registered).

(continued)

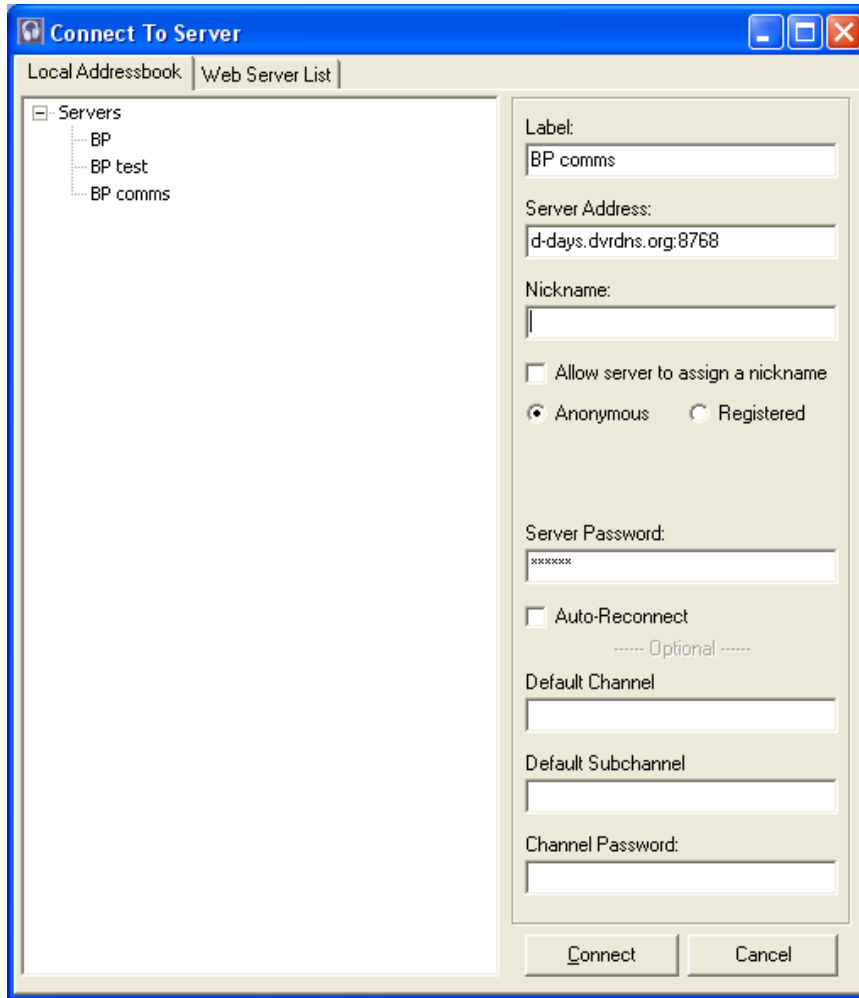


Figure 4 - TS 2 Connect To Server window with more pending new TS 2 server information (for the BP comms TS 2 server).

- g. For the server password, put in the server password – if used (for BP comms TS 2 server, the server password is **yohoho** - EXACTLY as stated in bold (the password is case sensitive).
- h. Leave the other setting below the server password (“Auto-Reconnect”, “Default Channel”, “Default Subchannel” and “Channel Password:”) blank as shown in Figure 4.
- i. Now move your mouse pointer to the “Connect” button and left click on it. You should now connect to the TS 2 server you have set up.
- j. In the future, if you wish to enter the TS 2 server you just made, the server name you gave it in step e. will now be available for you to select when you enter the *Connect To Server* window – see Figure 2.

If you have any connection problems at this point, see the Troubleshooting TS 2 section at the end of this document.

The TS2 voice testing and settings

Here is a brief description of some voice testing and some of the most common settings used in TS 2. In the TS2 start window (see Figure 1), select “Settings” in the menu at the top center of the window. Now move your mouse pointer down to the words “Sound Input/Output Settings” (the words next to the speaker icon). A new window will open named “Sound Settings” (see Figure 5).

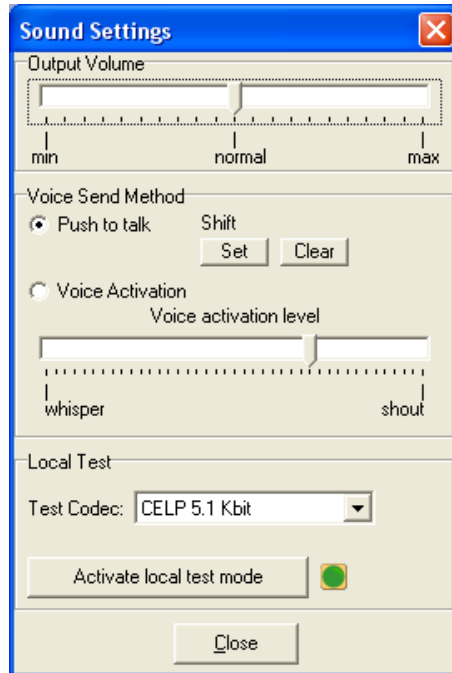


Figure 5 – Sound Settings window.

You can adjust most of the TS 2 sound levels from this window, as follows:

- a. The “Output Volume” setting adjusts the volume level of the other people you may hear in TS 2.
- b. The “Voice Send Method” is used to select the type of talk method 1) push to talk using a key on the keyboard that you can program using the “Set” button and un-program using the “Clear” button. Or, you can make TS 2 start to transmit (activate) when you talk. You can set the activation level using the “Voice Activation Level” control; “whisper” is very sensitive – “shout” is the least sensitive.
- c. “Local Test” will allow you to hear yourself exactly how the other people in the TS 2 server will hear you. To start a local test, select a “Test Codec:” (the selection of a test codec is optional), and the select “Activate local test mode” If you are using *Voice Activation* – just talk. The green activation indicator will go on, and you should be able to hear yourself talk. If you are using *Push to talk* – press the key to activate your TS 2. The green activation indicator will go on, and you should be able to hear yourself talk. You can disable the local test mode by selecting the same local test mode activation button – now named “Deactivate local test mode”
- d. Press the “Close button to return to the TS 2 start window.

Note: If you have a regular microphone and regular speakers (not head phones or a headphone/microphone combination), you may hear a squealing which is most likely audio feedback. If this happens, disable the local test mode.

Troubleshooting TS 2

In this section, I will go over some of the most common problems encountered with TS 2.

1. When trying to connect to a known good TS 2 server IP address, you get the “bad login name or password wrong” error: **Make sure the server address is entered correctly (exactly), also make sure you have the password entered correctly (Exactly - the password is case sensitive).**
2. When trying to connect to a known good TS 2 server IP address, you get the “Socket Error # 11004” error: **Make sure the server address is entered correctly (exactly – this is a common reason for this error).**
3. When trying to connect to a known good TS 2 server IP address, you get the “No Reply from server Maybe the server is offline or maybe teamspeak is not running on it” error: **This error is usually caused by an incorrect TS 2 server IP address. Make sure the server address is entered correctly and entirely.**

This is a simple guide, if you have any problems which extend beyond what I have covered here, you could have a hardware issue, or your system may not be compatible with TS 2 (Windows Vista used to have some TS 2 issues).

Note: TS 2 has been superseded, and therefore no longer supported.